

CUSTOMER _____

CUSTOMER' S P/N _____

DESCRIPTION DIP Common Mode inductance

SGTE PART NO. GTFC1212-20mH-V

SAMPLE NO. S21031302 REVISION NO. A2 DATE 2023/10/8

SPECIFICATION FOR APPROVAL

FULLY APPROVED	REVISE APPROVED

SGTE[®] 感通科技

深圳感通科技有限公司（大陸工廠）

GANTONG TECHNOLOGY (SHENZHEN) CO., LTD.

深圳市平湖街道平湖村萬福路26號

No.26 Wan fu Road, Ping hu Village. Ping hu town, Shenzhen City.

Tel: 0755-28457600

Fax: 0755-28452952

感通科技有限公司（台灣辦事處）

臺北縣汐止市新台5路一段77號10樓之7

10F~7, NO.77, Sec.1, Hsin Tai 5 Road, Shi-chi City, Taipei.

Tel: 886-2-8698-2341

Fax:886-2-8698-2342

納美科技股份有限公司（香港辦事處）

LAPEE TECHNOLOGY LIMITED

香港九龍尖沙嘴加連威老道嘉蘭圍5-11號利時商業大廈17樓1713室

Room 1713 17/F, Rise Commercial Bldg5-11 Granville Cri cuit, Granville Rd, TSim Sha Tsui., Kln

Tel: 852-25301111

Fax: 852-25371111

<http://www.szqte.com>

SPECIFICATION

RoHS
COMPLIANT

Customers Part Number	Item Name	Date	
0	DIP Common Mode inductance	2023/10/8	
Gan Tong Part NO.	Sample NO.	Revision No.	A2
GTFC1212-20mH-V	S21031302	Page	4

Version	Change history	Before the change	After the change	Release date
A0	NEW	—	—	2023/10/8

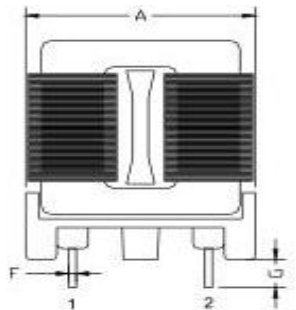
DRAWN BY	CHECKED BY	APPROVED BY
黄荣英	王康	田 一

SPECIFICATION

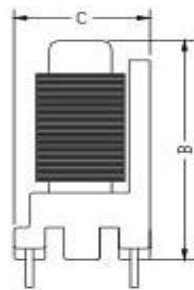
**RoHS
COMPLIANT**

Customers Part Number	Item Name	Date	
	DIP Common Mode inductance	2023/10/8	
Gan Tong Part NO.	Sample NO.	Revision No.	A2
GTFC1212-20mH-V	S21031302	Page	1-4

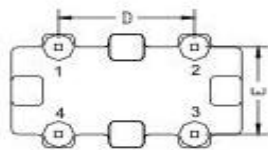
MECHANICAL & DIMENSIONS (Unit: mm)



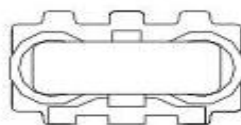
FRONT VIEW



SIDE VIEW

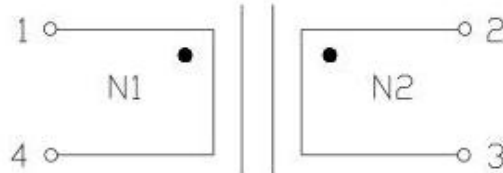
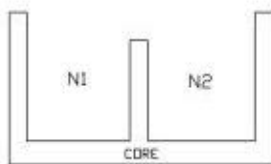


BOTTOM VIEW



TOP VIEW

A	18.0 Max
B	17.5Max
C	11.5 Max
D	11.0±0.5
E	8.0±0.5
F	0.65±0.05
G	3.5±0.5



ELECTRICAL REQUIREMENTS:

ITEM	SPEC	TOLERANCE	TEST FREQUENCY	TEST EQUIPMENT
L: (N1:1~4) (N2=2~3)	20mH	Min	1kHz /0.25V, 内阻20Ω	VR-115
DCR: (N1:1~2) (N2=3~4)	250mΩ	Max	At 25°C	VR-131

HI-POT Test:
COLL-COLL: AC 1500V/1mA/2S

SPECIFICATION

RoHS
COMPLIANT

Customers Part Number	Item Name	Date	
	DIP Common Mode inductance	2023/10/8	
Gan Tong Part NO.	Sample NO.	Revision No.	A2
GTFC1212-20mH-V	S21031302	Page	2-4

MATERIAL LIST:

NO	Material	Specification	Supply's name	UL NO.
1	磁芯	SQ1212 12K	山东恒瑞磁电科技有限公司	/
2	扁铜线	@*UEW180	广东力兹微电气技术有限公司	E504985
3	骨架	Phenolic (T375HF)UL 94 V-0 Class 耐温 150℃	长春人造树脂厂股份有限公司	E59481
4	凡立水	E962	珠海长先新材料科技股份有限公司	E335405
5	焊锡	Sn99% Pb-free Bar Solder	惠州市粤新电子材料有限公司	/

SPECIFICATION

**RoHS
COMPLIANT**

Customers Part Number	Item Name	Date	
	DIP Common Mode inductance	2023/10/8	
Gan Tong Part NO.	Sample NO.	Revision No.	A2
GTFC1212-20mH-V	S21031302	Page	3-4

SOLDING CONDITIONS

Figure 1. Re-flow Soldering

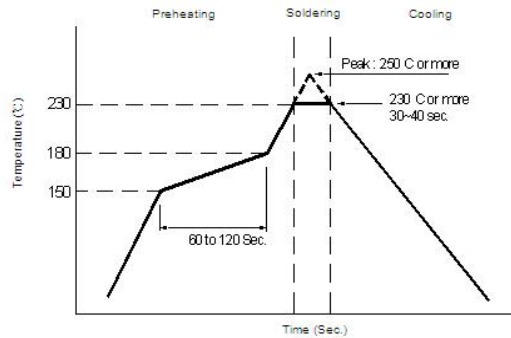
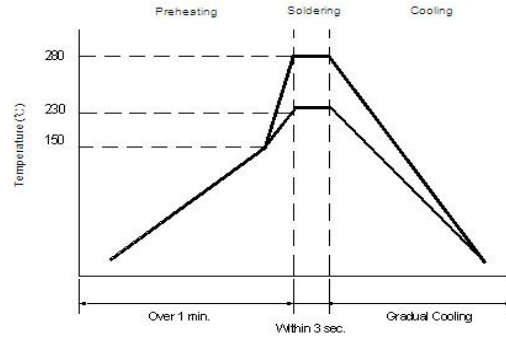


Figure 2. Hand Soldering



Reliability and Testing Conditions

Item	Specification	Conditions															
Solderability	More than 90% of the terminal electrode should be covered with solder.																
Solder Heat Resistance	Inductance within ±20% of initial value and appearance shall not break.																
Heat resistance	Inductance within ±20% of initial value. No disconnection or short circuit. Appearance shall not break.	After 500±12 hours in 145±5°C and 2 hour drying under normal condition.															
Cold resistance	Inductance within ±20% of initial value. No disconnection or short circuit. Appearance shall not break.	After 500±12 hours in -40±2°C and 2 hour drying under normal condition.															
Thermal shock	Inductance within ±20% of initial value. No disconnection or short circuit. Appearance shall not break.	After 10 cycles of following condition. <table border="1" style="margin-left: 20px; border-collapse: collapse; text-align: center;"> <thead> <tr> <th>Step</th> <th>Temperature (°C)</th> <th>Times (min.)</th> </tr> </thead> <tbody> <tr> <td>1</td> <td>-40±2</td> <td>30</td> </tr> <tr> <td>2</td> <td>Room Temperature</td> <td>Within 3</td> </tr> <tr> <td>3</td> <td>145±5</td> <td>30</td> </tr> <tr> <td>4</td> <td>Room Temperature</td> <td>Within 3</td> </tr> </tbody> </table>	Step	Temperature (°C)	Times (min.)	1	-40±2	30	2	Room Temperature	Within 3	3	145±5	30	4	Room Temperature	Within 3
Step	Temperature (°C)	Times (min.)															
1	-40±2	30															
2	Room Temperature	Within 3															
3	145±5	30															
4	Room Temperature	Within 3															
Humidity Resistance	Inductance within ±20% of initial value. No disconnection or short circuit. Appearance shall not break.	After 500±12 hours in 40±2°C and 90 to 95% humidity, and 2 hour drying under normal condition.															
* Vibration Test	Inductance within ±20% of initial value and appearance shall not break.	After vibration for 1hour, In each of three orientations at sweep vibration (10~55~10Hz) with 1.52mm P-P Amplitudes.															

SPECIFICATION

RoHS
COMPLIANT

Customers Part Number	Item Name	Date	
	DIP Common Mode inductance	2023/10/8	
Gan Tong Part NO.	Sample NO.	Revision No.	A2
GTFC1212-20mH-V	S21031302	Page	4-4

包装

包装箱明细

包装箱	数量	材质	尺寸(W×D×H mm)
纸箱	1	纸板	358*265*190
吸塑盒	15	PET	353*260*12
盖板	2	纸板	353*260*3

